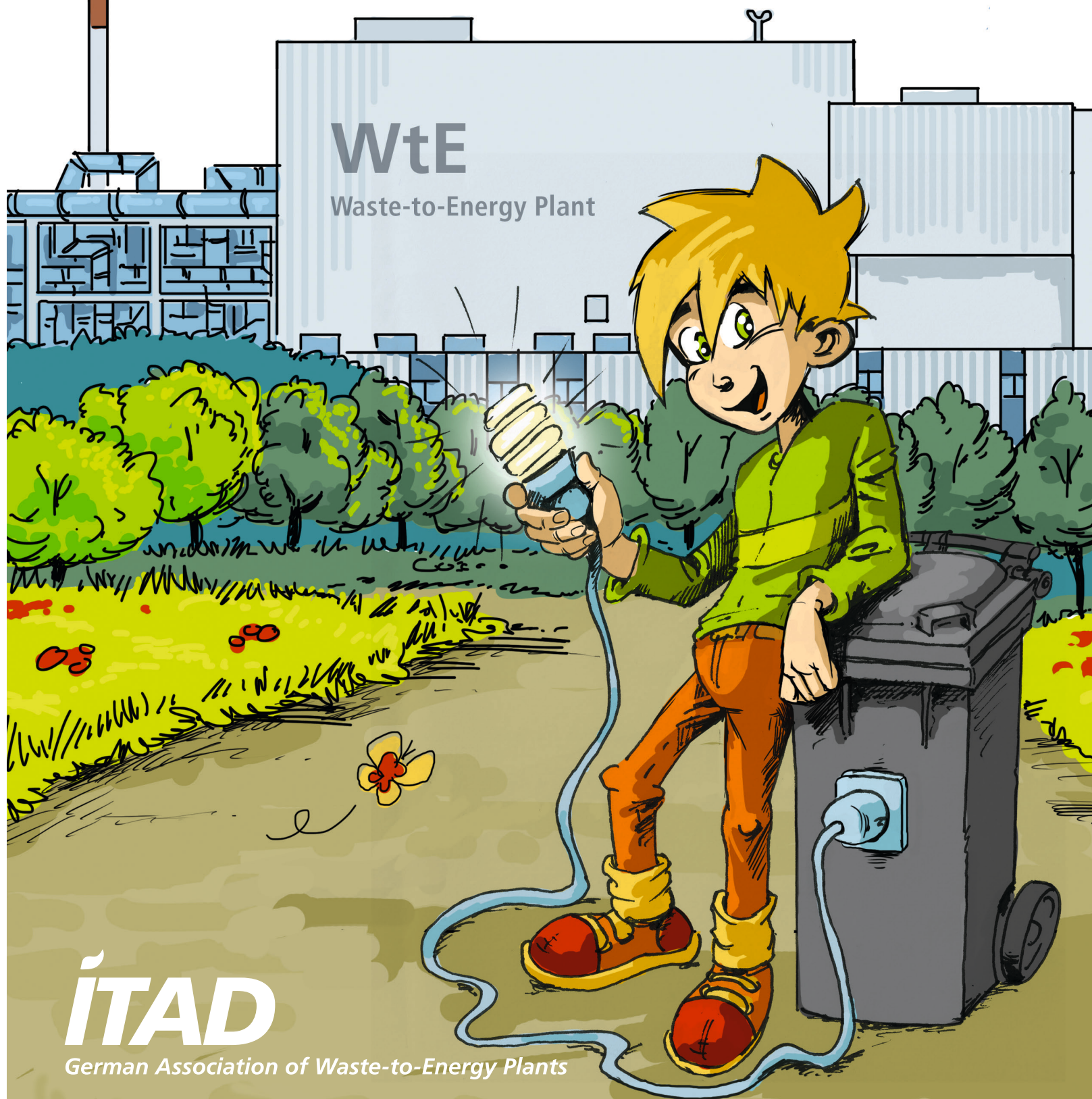


# TURNING WASTE INTO ENERGY? HOW DOES THAT WORK?

THOMAS' ADVENTURE IN  
A WASTE-TO-ENERGY PLANT



**ITAD**

German Association of Waste-to-Energy Plants



This is Thomas. He is the hero of our story and is interested in everything to do with technology and environmental protection. On top of that, he is incredibly curious and always on the lookout for new adventures.

### Turning Waste into Energy? How does that work? Thomas' adventure in a Waste-to-Energy Plant

Text and Illustration:  
Carsten Herbert  
Andreas Demko

[www.heldenstreich.com](http://www.heldenstreich.com)

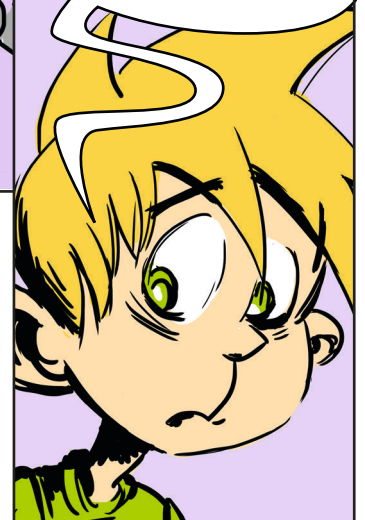
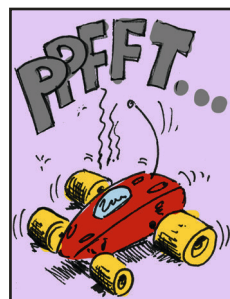
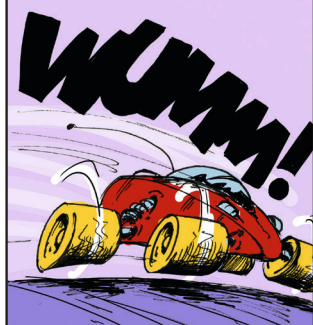
Courtesy of ITAD  
Association of German Waste to Energy Plants  
Translated by  
ESWET – the European Suppliers of Waste to Energy Technologies  
European Suppliers of Waste to Energy Technology  
[www.eswet.eu](http://www.eswet.eu)  
Avenue Adolphe Lacomblé 59  
B-1030 Brussels





Thomas got a remote-controlled car for his birthday, which he has been racing around the house for some time ...

**Blast!**  
The battery is dead again. I guess it's empty ...



Empty? Empty of what?  
And where does it come from?

I'll look it up in my dictionary.

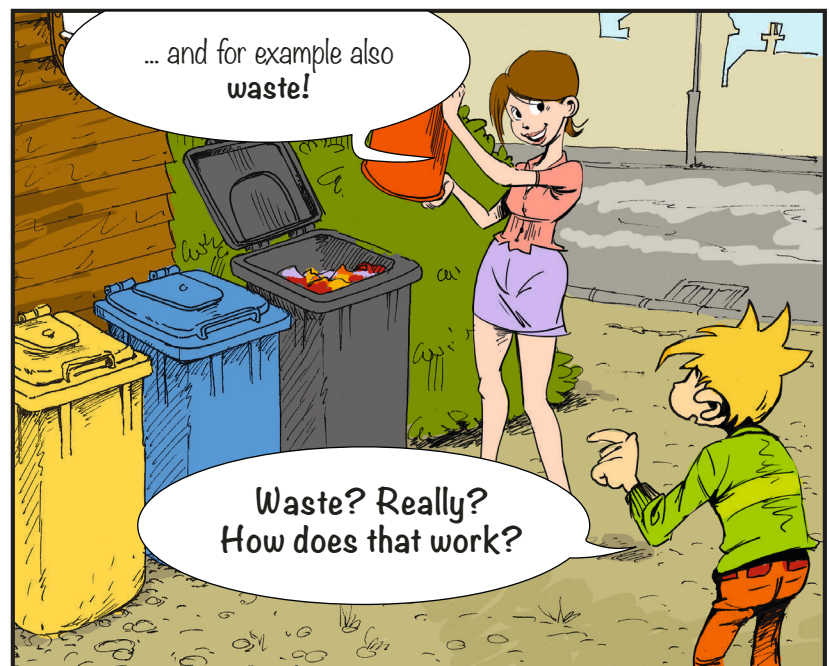
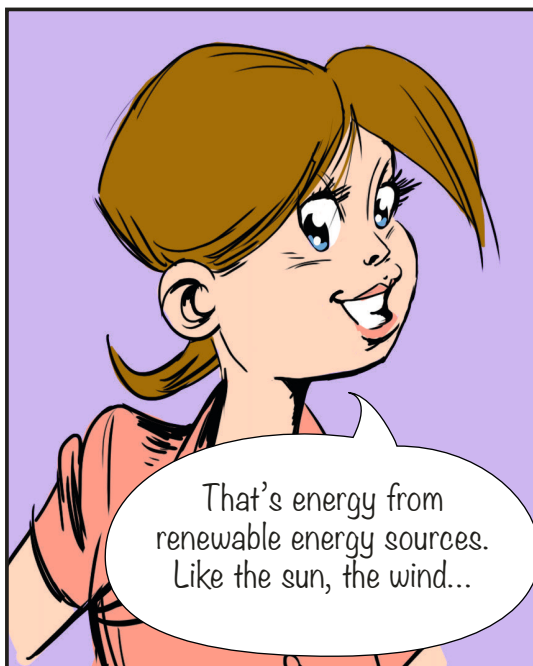


So, what have we got?  
There are apparently different types of energy:  
"nuclear energy" ...

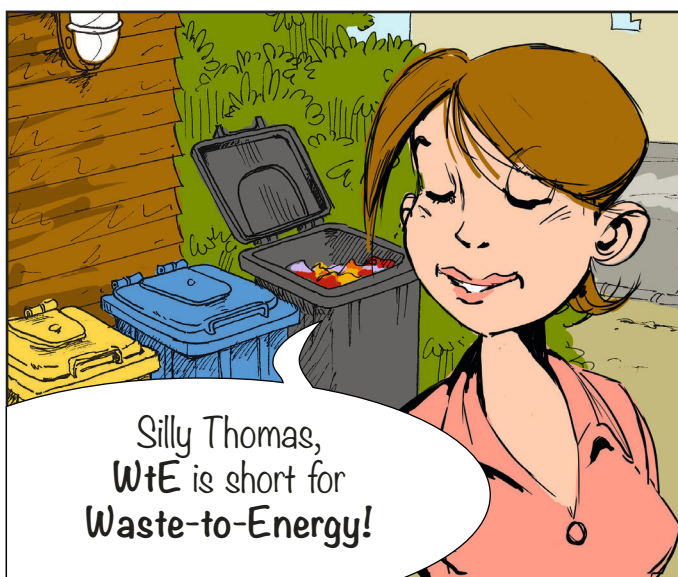
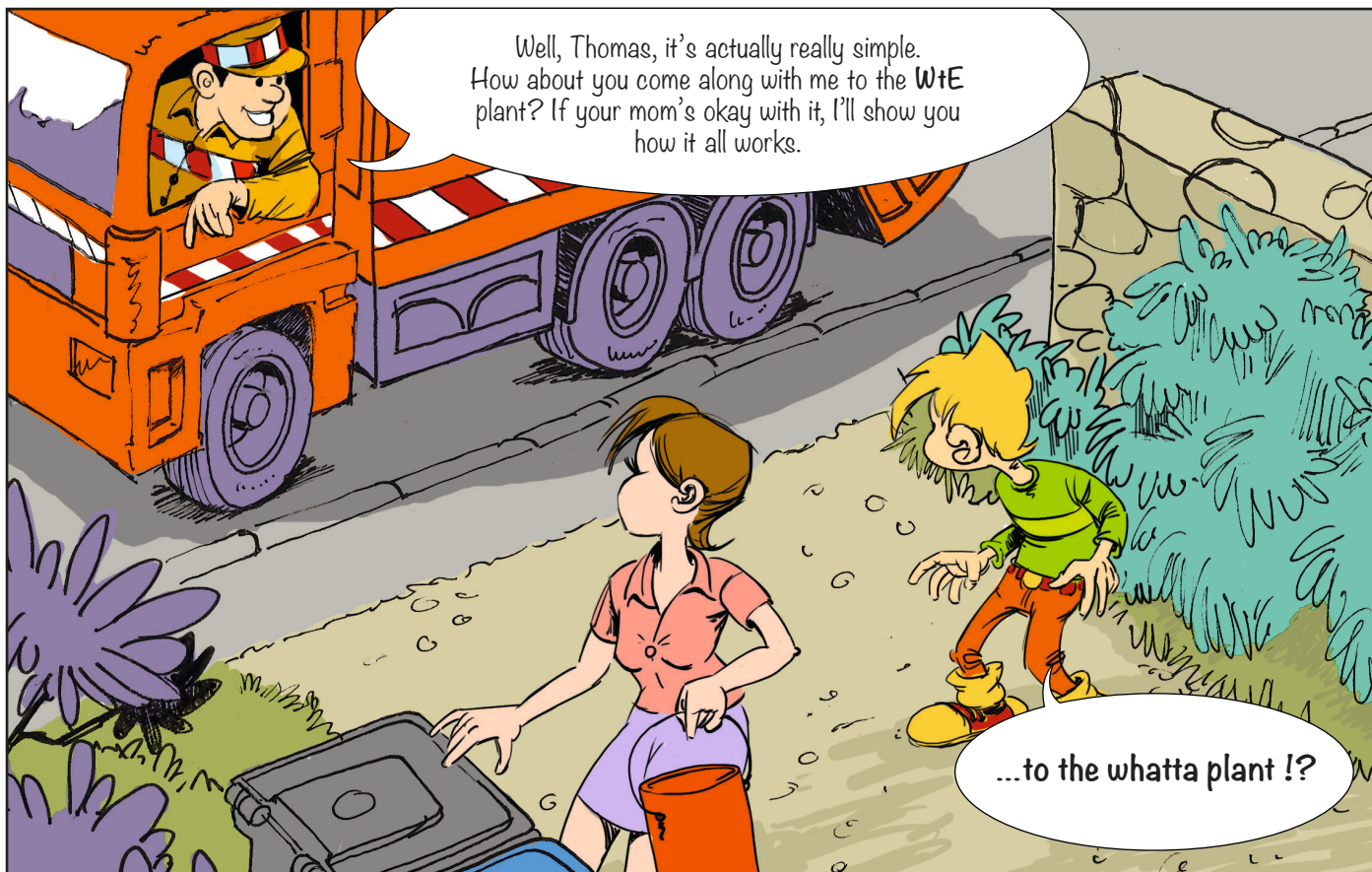
...  
"green energy"  
...














Do you know what waste really is?

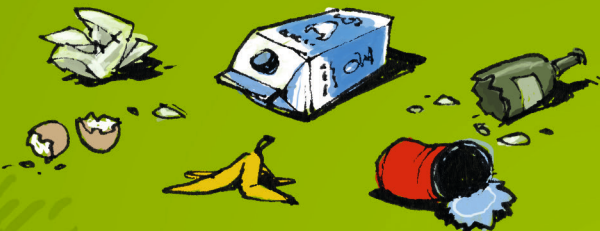
When we talk about **Waste**, we are talking about all the leftovers we no longer need. It's also called **rubbish** or **garbage**.

Do you know what kind of waste we produce at home?

For example:  
food leftovers,  
garden waste, paper, plastic  
wrappers, old clothes,  
batteries, ...

... old furniture, drink  
cartons and so  
on and so forth ...

If you want to do  
something useful with the waste,  
you should  
**always sort it first!**





... and those are just a few of the many types of waste that can be recycled

### Bio-Waste

Waste from the garden and the kitchen can be turned into compost and energy.

### Scrap Waste

The different kinds of metal waste can be used to produce new metal products.

### Waste Glass

Glass bottles can be recycled countless times. Most new bottles are largely made from old bottles.

### Textile Waste

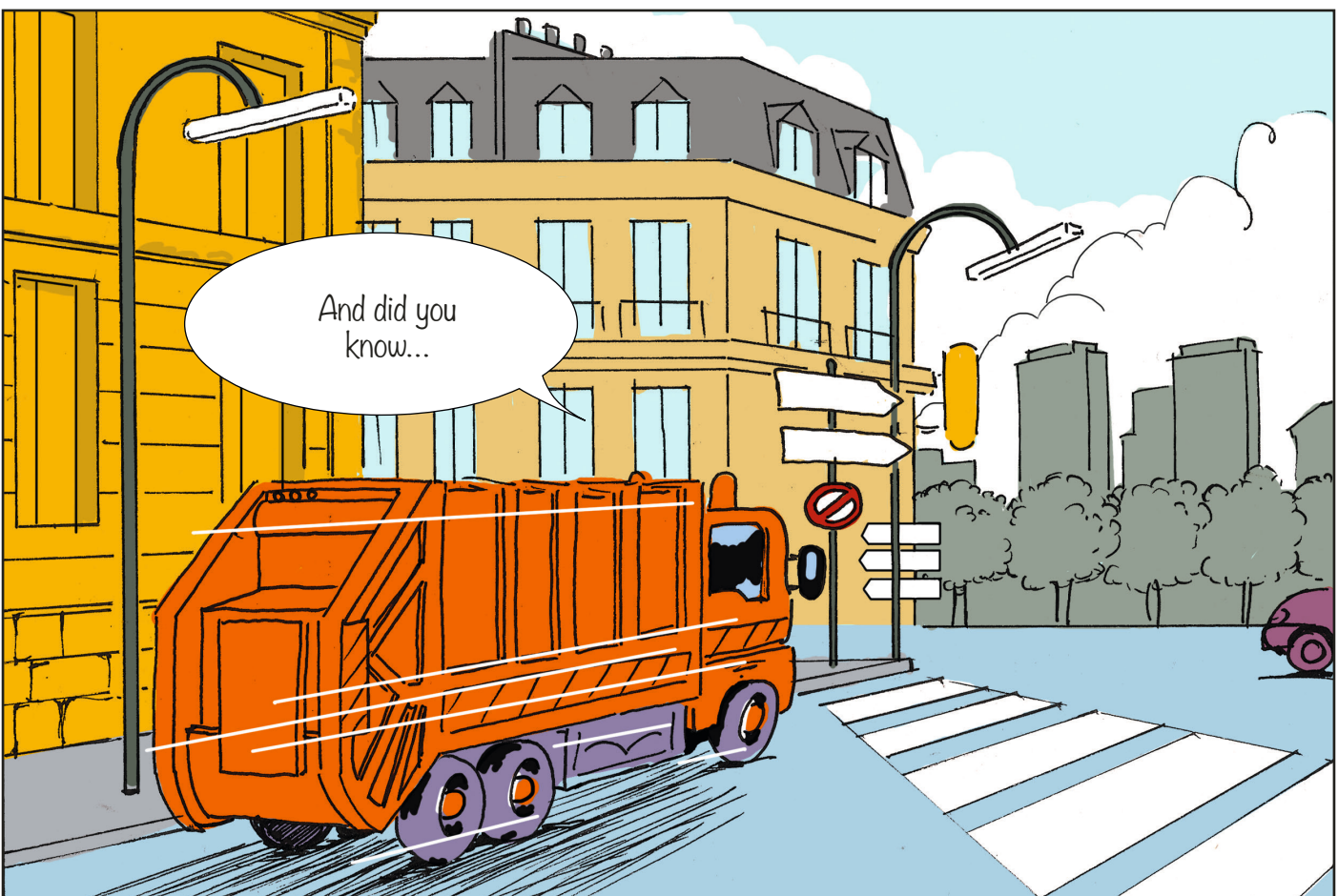
Clothes that people don't want any more - because they are, for example, too small - are collected and given to people who cannot afford new ones.

### Waste Paper

Old newspapers and cardboards can be recycled they're times.









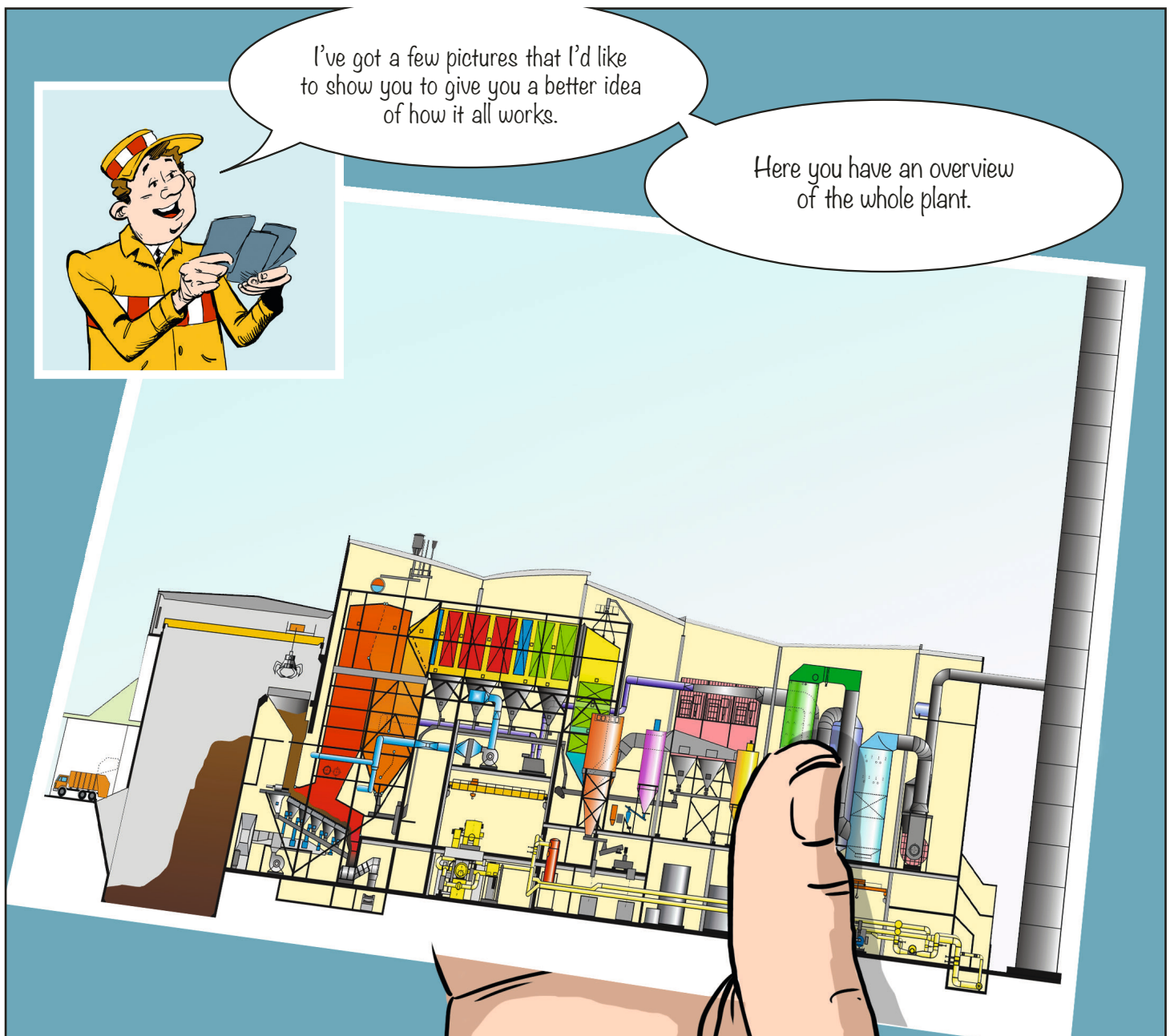
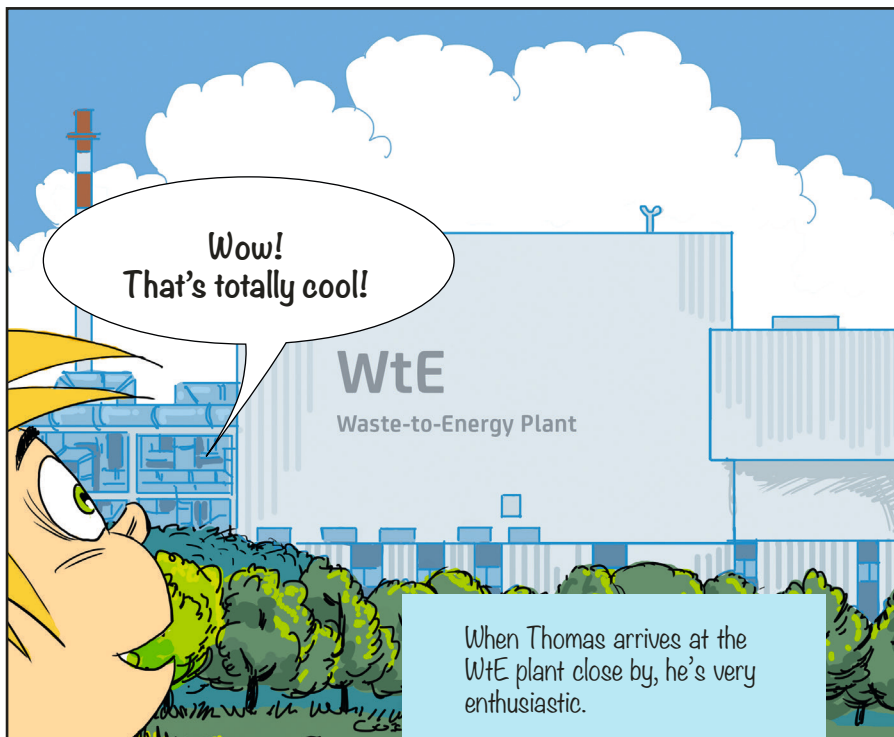


Every person produces about **500 kilos** of waste per year.

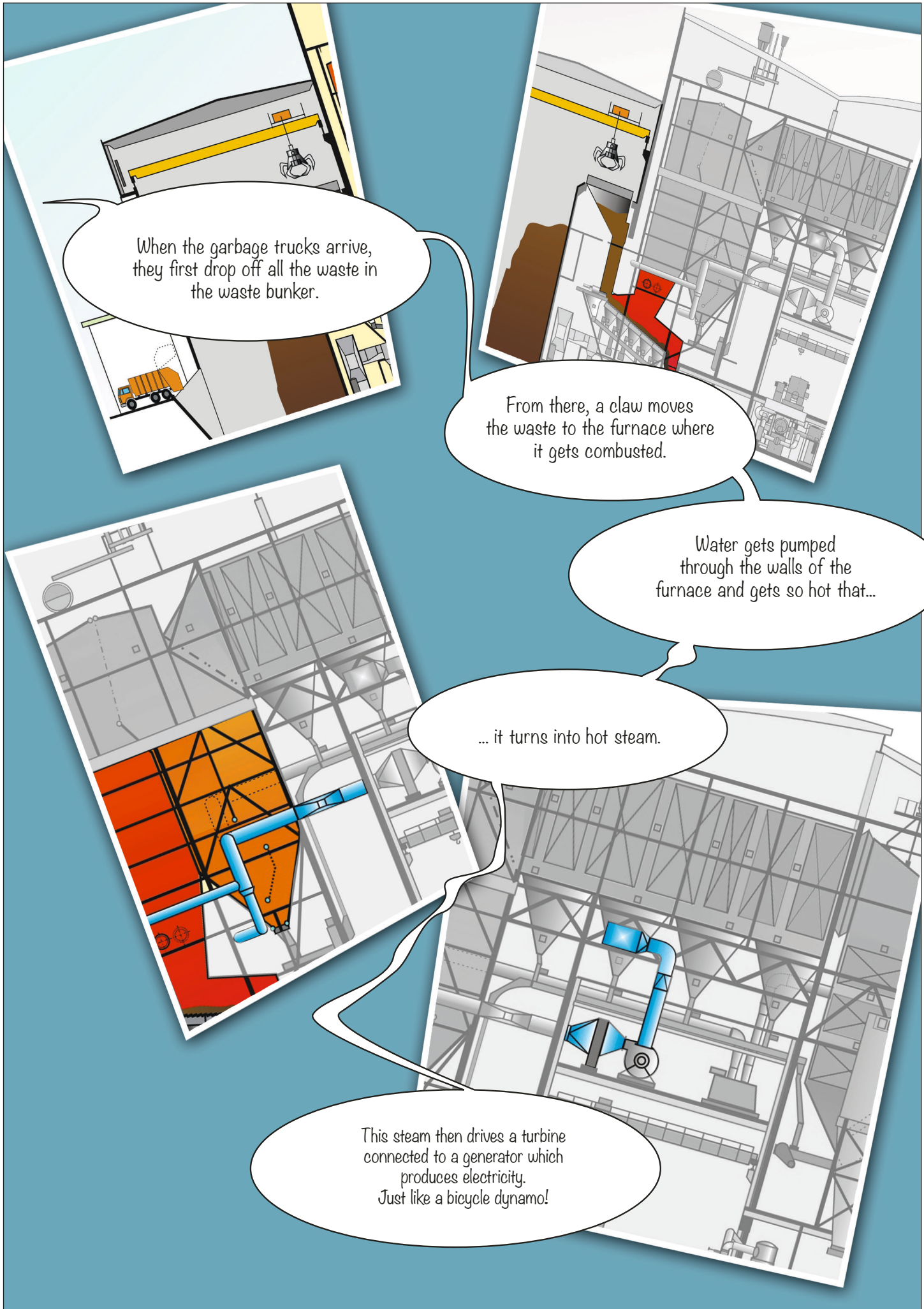


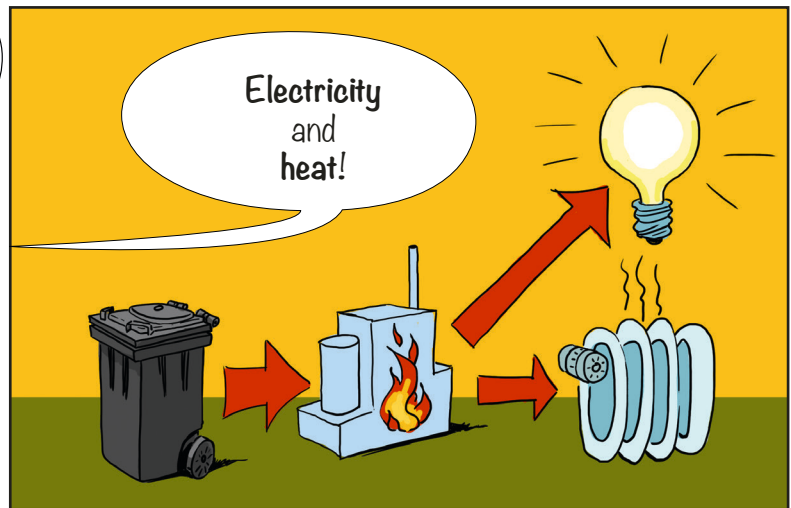
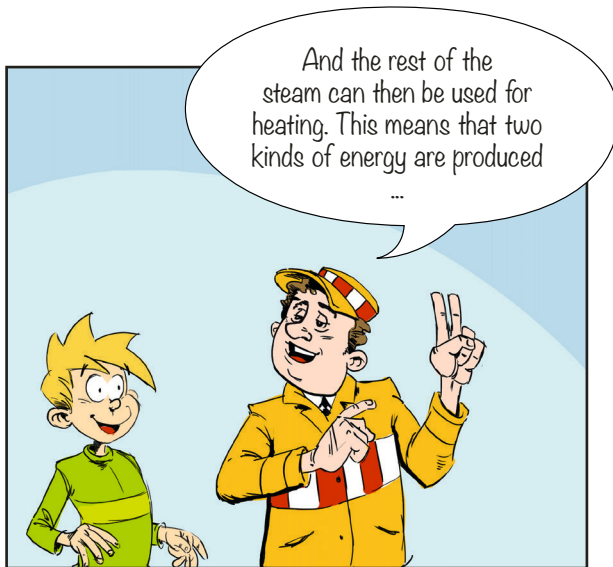
This is about **30 big** trash bags!  
Out of which about **150 kilos** end up in our WtE plant.



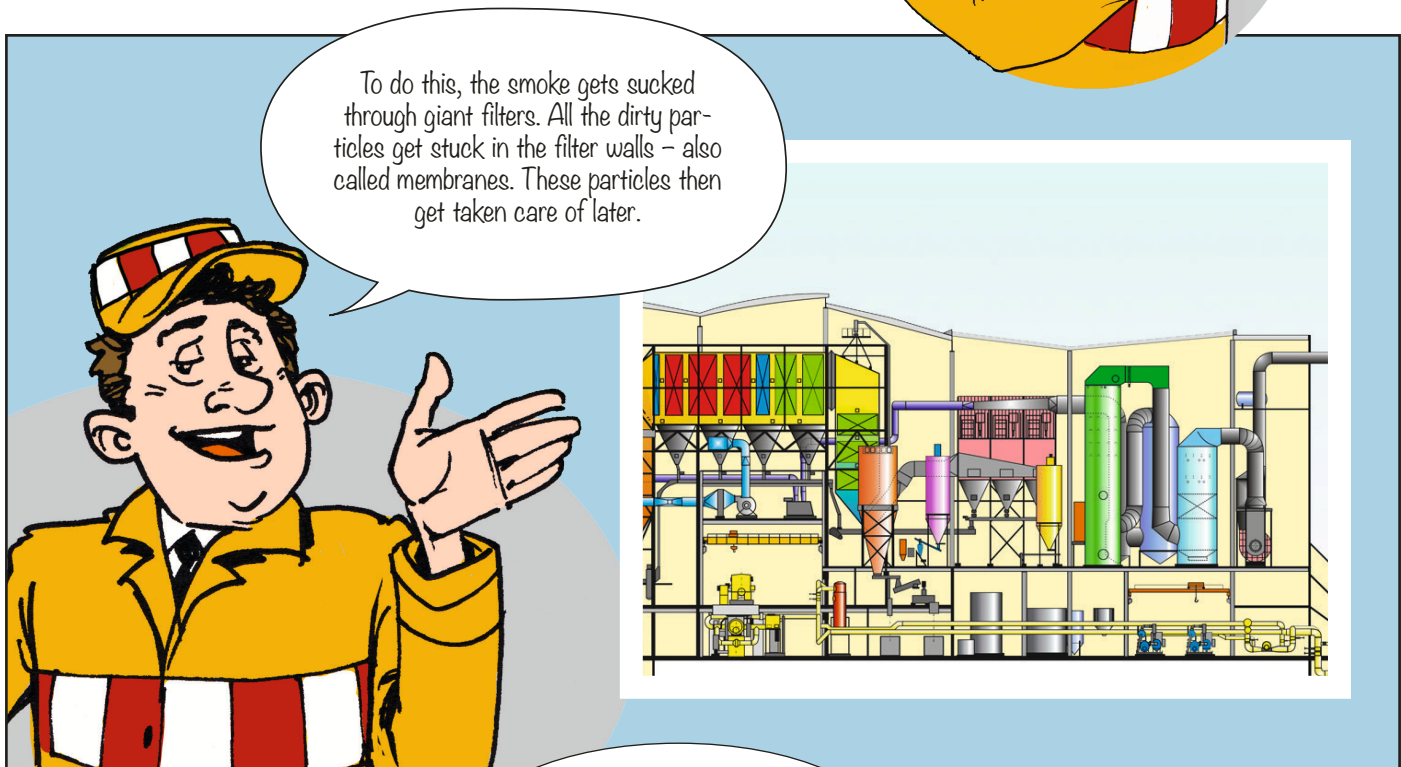


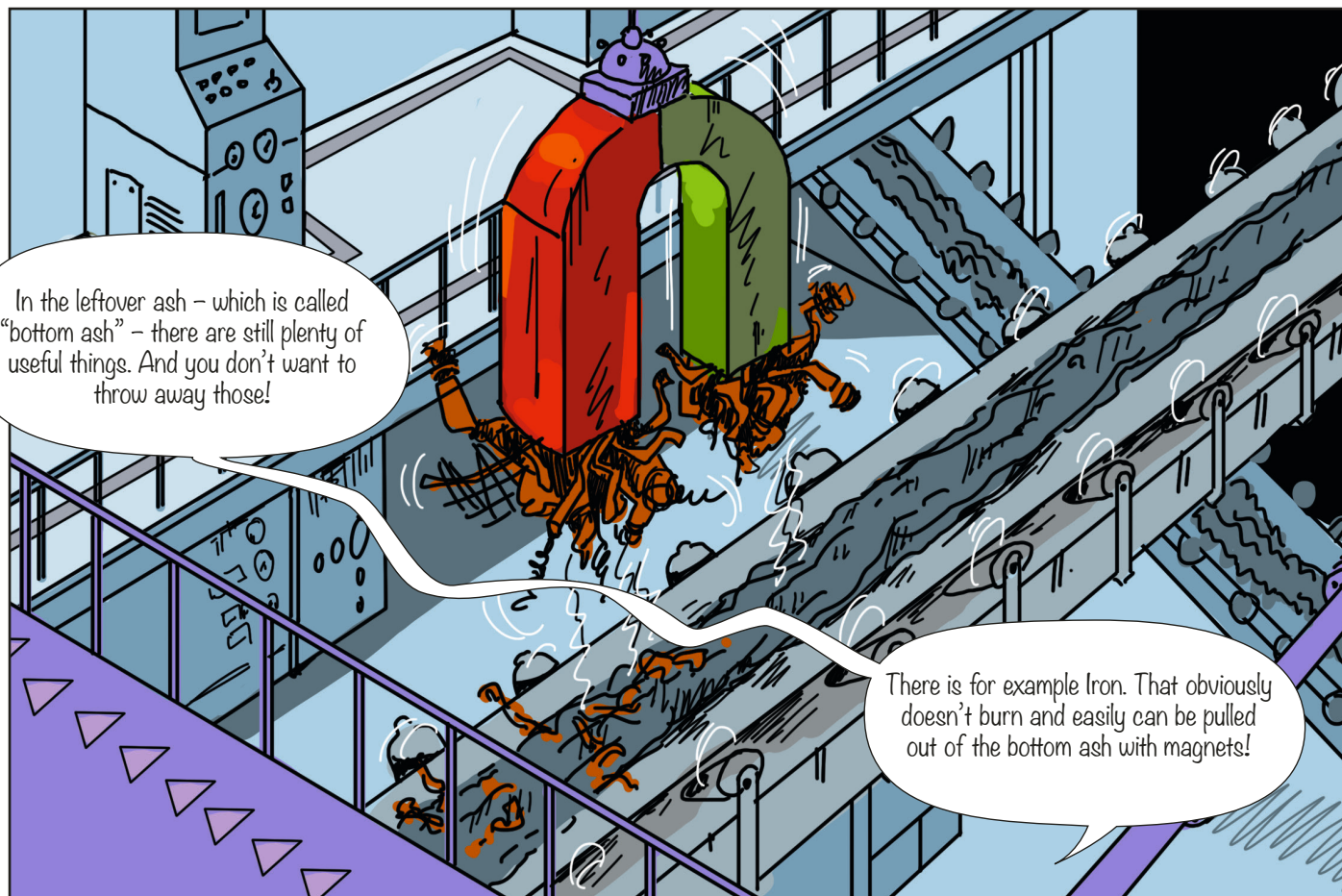


















Courtesy of ITAD  
Association of German Waste to Energy Plants  
Airport City  
Peter-Müller-Straße 16a  
D-40468 Düsseldorf

Tel +49 (0)211 93 67 609 - 0  
info@itad.de  
www.itad.de

**ITAD e.V. operates climate neutral.**  
This print product is recorded in the  
emission inventory and will be offset.

[itad.de/nachhaltigkeit](https://www.itad.de/nachhaltigkeit)



XQ4

This print product has been  
awarded the Blue Angel.